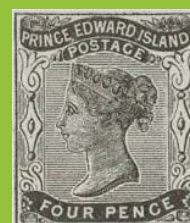
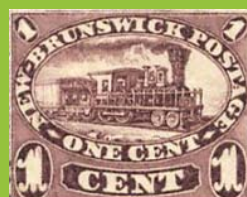


BRITISH NORTH AMERICA SPECIALIZED - Colonies Stamp Album 2023

British Columbia
Vancouver Island
Nova Scotia
New Brunswick
Prince Edward Island



Andrew L. Winter
John M. Walsh, FRPSC



Dear Collector,

We thank you for choosing our Stamp Album. This album reflects the 2023 British North America Specialized Stamp Catalogue numbering system. Increasingly, collectors, dealers and auction firms rely on the Catalogues to accurately describe and estimate the market value of Newfoundland, British North America and Canada to 1951 stamps and related ephemera.

We recognize that every collector has different preferences for mounting their collection. Based on decades of experience, it is recommended you mount your album pages inside clear acetate page holders that have three holes in the acetate sheet margin. They allow you to remove pages for various purposes, including exhibition desires.

Enjoy your collecting and have fun.

Andrew L. Winter & John M. Walsh, FRPSC
www.nfldstamps.com
c/o Walsh's Philatelic Service
9 Guy Street
St. John's, Newfoundland
Canada A1B 1P4

1868-1871 PROVISIONALS

engraved; Crown over CC watermark; perf 14 x 14
De La Rue & Co., London



5
black on brown
TWO CENTS
1868



6
black on bright red
5.CENTS.5
1869



7
blue on lilac rose
10.CENTS.10



8
violet on orange
25.CENTS.25
1869



9
red on violet
50.CENTS.50
1869



10
green on green
1.DOLLAR.1

1868-1871 PROVISIONALS

engraved; Crown over CC watermark; perf 12.5 x 12.5
De La Rue & Co., London



6a
black on bright red
5.CENTS.5
1869



7a
blue on lilac rose
10.CENTS.10
1869



8a
violet on orange
25.CENTS.25
1869



9a
red on violet
50.CENTS.50
1869



10a
green on green
1.DOLLAR.1
1869

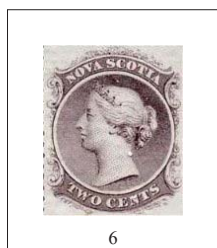
NOVA SCOTIA
1860-63 CENTS Issue
 engraved; no watermark; perf 12 x 12
 American Bank Note Co., New York
 Queen Victoria



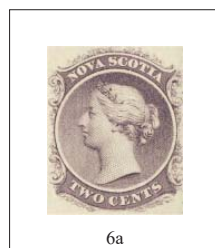
5
1¢ black



5a
1¢ black
yellowish paper



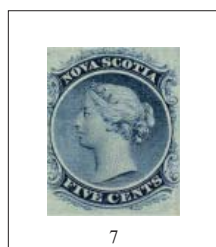
6
2c lilac



6a
2c lilac
yellowish paper



6b
2c gray purple



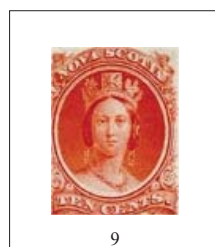
7
5¢ blue



7a
5¢ blue
yellowish paper



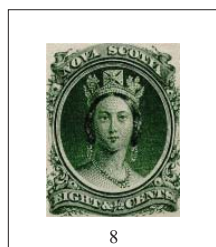
7b
5¢ dark blue



9
10¢ vermilion



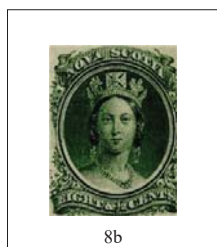
9a
10¢ vermilion
yellowish paper



8
8½¢ green



8a
8½¢ green
yellowish paper



8b
8½¢ yellow green



10
12½¢ black



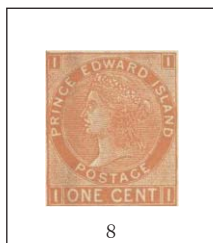
10a
12½¢ black
yellowish paper

PRINCE EDWARD ISLAND

1872 CENTS Issue

engraved; no watermark; various perms

Charles Whiting, London



8

1¢ brown orange
11.75 x 11.75



8a

1¢ yellow orange
11.75 x 11.75



8b

1¢ yellow orange
12.5 x 12.5



8c

1¢ yellow orange
11.75 x 12.5



9

2¢ ultramarine
12.25 x 12.5



9a

2¢ ultramarine
11.75 x 12.25



10

3¢ rose
11.75 x 11.75



10a

3¢ rose
period between
PRINCE • EDWARD



10b

3¢ rose
12.5 x 12.5



10c

3¢ rose
11.75 x 12.5



11

4¢ green
12.25 x 12.25



11a

4¢ yellow green
12.25 x 12.25



12

6¢ black
12.25 x 12.25



13

12¢ violet
12.25 x 12.25