



These Gifts I Bring Thee

WALSH

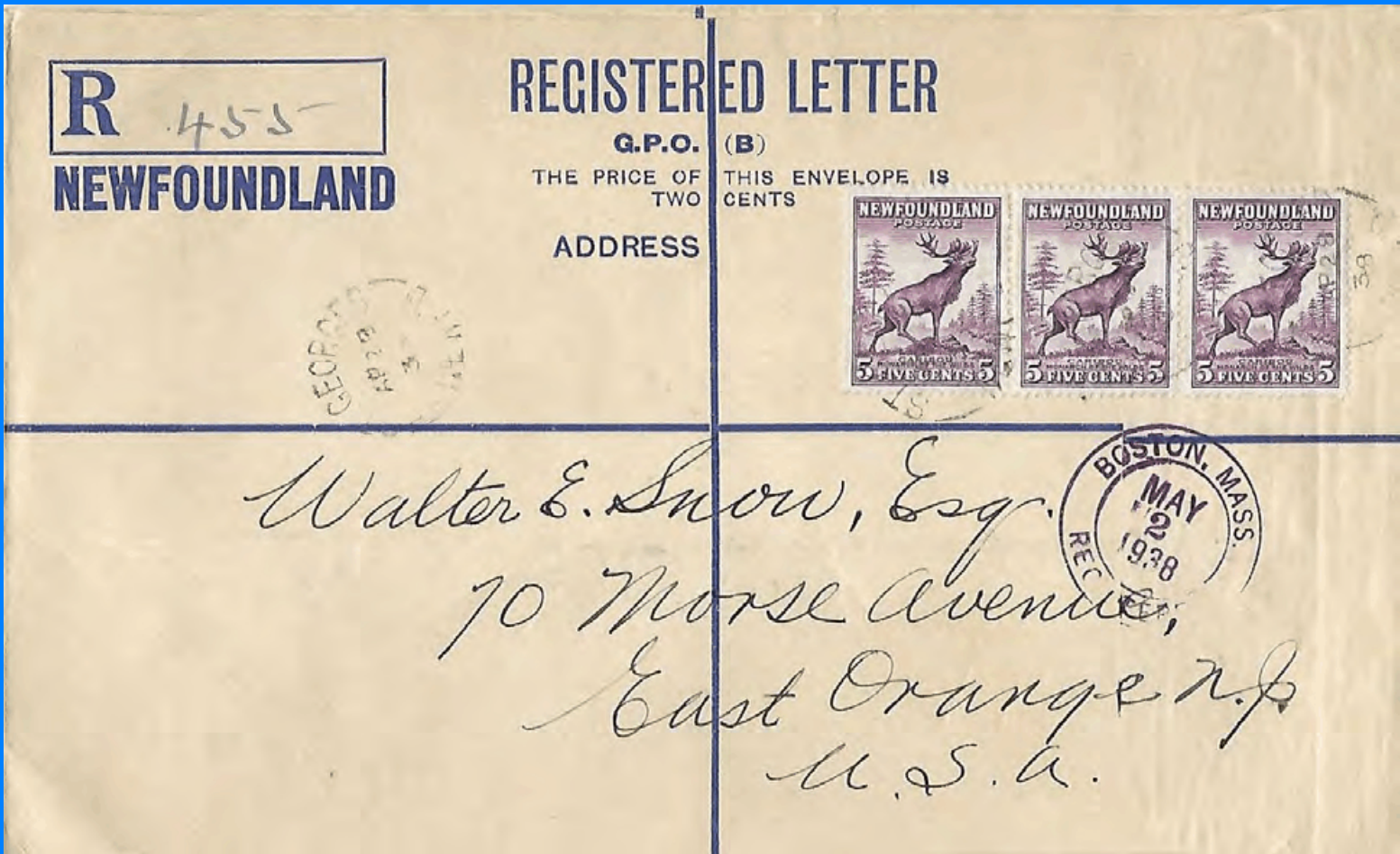
2024

NEWFOUNDLAND SPECIALIZED

Stamp Catalogue



15th edition



NSSC RE 2 earliest known recorded use of Registered Envelope type B dated April 28, 1938. (BCB)
5¢ Caribou die II size 21 mm wide 13.5 x 13.5; die I seen & both on cover in 13.3 x 13.3 perforation.
Absolute proof dry paper printing done by Perkins Bacon & Co; prior to transition of
Waterlow & Sons doing post May 1941 *Blitz Printing* to 1942 Second Resources issue in 21 mm.
Waterlow & Sons only used the designed 5¢ die I sized 21 mm with 12.5 x 12.5 with discovery
of 12.5 x 12.8; 12.8 x 12.8; 12.8 x 12.5 being used; never 13.5 x 13.5 or 13.3 x 13.3 perforations.

WALSH

NEWFOUNDLAND
SPECIALIZED

Stamp Catalogue
15th edition



John M. Walsh, FRPSC
John G. Butt (1939 - 2000)

featuring: essays, die proofs, postage & revenue stamps, articles, flight covers, postal rates, postcards, cornercards

research provided and offered by **Jean-Claude Vasseur**, FRPSL, AEP

fakes and forgeries provided through research by **Ed Wener**

forgeries provided through research by **Richard Gratton**, FRPSC, AIEP

Moens Newfoundland fake corrections offered from research by **Gerhard Lang-Valchs**

company perfins provided through research by **Barry C. Senior**

die proof images, quantities provided and offered by **Glen Lundeen**

revenue rate findings provided through research by **Peter de Groot**

ration stamp/coupon information contributed by **Thomas F. Nemec**, Ph.D

stampless postal rates provided through research by **Colin D. Lewis**, FCPS

pence to decimal 1865-73 conversion rate interpretations from research by **Colin D. Lewis**, FCPS

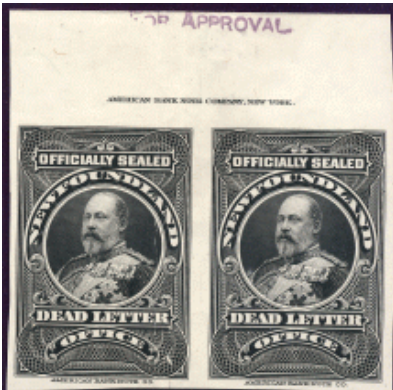
tobacco tax images contributed by **John B. Harper** and **Terrance R. Harris**

die proofs; colour trials provided from extracted research of **Kenneth Minuse** and **Robert H. Pratt**

ABNCo, NBNCo New York Printings Cents covers 1865 - 1879 provided through research by **Sammy Whaley**

Railway T.P.O. and R.P.O. cancels provide through research by **Lewis M Ludlow** and **Brian T. Stalker**, FCPS

postcard corrections offered by **Brian C. Bursey**; improved **Raphael Tuck** listings provided by **David Ogden**



Walsh Newfoundland Specialized Stamp Catalogue

Walsh's Philatelic Service 9 Guy Street, St. John's,
Newfoundland, Canada A1B 1P4

voice: 1-709-685-0560

email: info@nfldstamps.com site www.nfldstamps.com

© 1988	First Edition	ISBN 0 — 9693434 — 0 — X
© 1992	2 nd Edition	ISBN 0 — 9693434 — 1 — 8
© 1995	3 rd Edition	ISBN 0 — 9693434 — 2 — 6
© 1998	4 th Edition	ISBN 0 — 9693434 — 3 — 4
© 2002	5 th Edition	ISBN 0 — 9693434 — 4 — 2
© 2006	6 th Edition	ISBN 0 — 9693434 — 5 — 0
© 2010	Combined 7 th Edition version	ISBN 978 — 0 — 9693434 — 7 — 9
© 2010	Nfld. Specialized 7 th Edition vol. I	ISBN 978 — 0 — 9693434 — 8 — 6
© 2010	BNA Specialized 7 th Edition vol. II	ISBN 978 — 0 — 9693434 — 9 — 3
published as eCatalogues starting in 2012		
© 2012	Walsh Newfoundland Specialized 8 th Edition	ISBN 978 — 0 — 9876862 — 2 — 0
© 2012	Walsh British North America Specialized 8 th Edition	ISBN 978 — 0 — 9876862 — 3 — 7
© 2014	Walsh Newfoundland Specialized 9 th Edition	ISBN 978 — 0 — 9876862 — 6 — 8
© 2014	Walsh British North America Specialized 9 th Edition	ISBN 978 — 0 — 9876862 — 7 — 5
© 2016	Walsh Newfoundland Specialized 10 th Edition	ISBN 978 — 0 — 9876862 — 8 — 2
© 2016	Walsh British North America Specialized 10 th Edition	ISBN 978 — 0 — 9876862 — 9 — 9
© 2018	Walsh Newfoundland Specialized 11 th Edition	ISBN 978 — 1 — 988823 — 00 — 3
© 2018	Walsh British North America Specialized 11 th Edition	ISBN 978 — 1 — 988823 — 01 — 0
© 2020	Walsh Newfoundland Specialized 12 th Edition	ISBN 978 — 1 — 988823 — 02 — 7
© 2020	Walsh British North America Specialized 12 th Edition	ISBN 978 — 1 — 988823 — 03 — 4
© 2022	Walsh Newfoundland Specialized 13th Edition	ISBN 978 — 1 — 988823 — 04 — 1
© 2022	Walsh British North America Specialized 13th Edition	ISBN 978 — 1 — 988823 — 05 — 8
© 2023	Walsh Newfoundland Specialized 14th Edition	ISBN 978 — 1 — 988823 — 06 — 5
© 2023	Walsh British North America Specialized 14th Edition	ISBN 978 — 1 — 988823 — 07 — 2
© 2024	Walsh Newfoundland Specialized 15th Edition	ISBN 978 — 1 — 988823 — 08 — 9
© 2024	Walsh British North America Specialized 15th Edition	ISBN 978 — 1 — 988823 — 09 — 6

at philatelic exhibitions the NSSC has received numerous awards and recognition:

VERMEIL — INDIPEX 2011; PACIFIC EXPLORER AUSTRALIA 2005

VERMEIL — WORLD STAMP CHAMPIONSHIP SINGAPORE 2004

LARGE SILVER — ESPANA 2004 VALENCIA; PACIFIC'97 SAN FRANCISCO; WASHINGTON 2006

SILVER — STAMP SHOW 2000 LONDON; ESPANA 2000 MADRID



Collectors Club Chicago prestigious PRATT AWARD 1998

VERMEIL with PRIX d' HONNEUR — C3NPLE '95

*"This is an exceptional example of a specialized catalogue.
Perhaps all the information one would want in such a title."*
Canada's Third National Philatelic Literature Exhibition '95

SILVER MEDAL — PHILITEX '92

"The first true specialized catalogue of recent days. Considerable depth." Philitex '92, New York

"... the most significant tool a serious collector of Newfoundland philately can own."

"The NSSC is much more helpful for Newfoundland postal historians than other standard catalogues."
BNA Topics Vol. 59, No. 3, July-September 2002

catalogue values are provided in whole *United States dollar*

A special *thank you* is offered to *Ralph Grothe* for his help in the printing of past editions.

Thank you to my friend Thomas F. Nemec for his invaluable editorial contributions since 1988.

With the help of Andrew L. Winter these eCatalogue editions have come to fruition.

Thank you very much Andrew.

author John M. Walsh in 2011 was privileged to be offered fellowship in RPSC
and is the recipient of seven Collectors Club Chicago prestigious PRATT AWARDS

and in 2016 the Royal Philatelic Society Canada impressive GELDERT MEDAL

and in 2021 the Canadian Philatelic Society of Great Britain esteemed FOUNDERS TROPHY

"Before your philatelic happiness has pass
Step in and take a fulfilling glance!"



The Newfoundland Specialized Stamp Catalogue (NSSC):

A Brief Survey of the Eight Editions by Thomas F. Nemec, Ph.D. December 2011

Tom Nemec retired from teaching as a full professor of anthropology in 2004; in 2007 he retired as an honorary research professor; deceased 2019.

p.s.: starts additional info that has been added by Walsh after the last sentence by Nemec.

Those who study Newfoundland stamps, stationery and postal history must do research by consulting renowned philatelists and studying philatelic and historical publications, stamp and auction catalogues (with prices realized) and retail price lists. To better understand their own collections Walsh and Butt discussed their research results with local, national and international philatelists. Encouraged, they decided to publish a catalogue without prices that was a useful handbook in 1988. It boldly introduced a new numbering system to replace the antiquated systems initially developed in the USA and UK in the 1800s. As such, they challenged philatelists to reconsider the organizing principles underlying the now orthodox established systems. Following feedback they produced the 2nd edition in 1992. Realistic valuations for stamps and collateral material were suggested along with Walsh's findings on plate numbers which challenged the work of some specialists. Butt also introduced his preliminary work on outport, town and city post offices and cancels. The 17,000 km coasts of the Colony (since 1824) had anchorages that had been the sites of seasonal fishing and whaling stations since the 1500s. Eventually, between 1200 to 1500 outports were eventually established - some of which had post offices - by the late 1800s. The 3rd edition (1995) added postal rates, first flights and heretofore unknown perforation varieties. Recognition of the popularity of local pre-1949 viewcards or picture postcards (ppcs) was represented by a long list of publishers with the card captions and numeric labels. By the 4th edition (1998) that list had grown to 3600. Although most ppcs were printed locally, many others were produced elsewhere during the Edwardian era. Collecting them became a new popular hobby. Following Butt's death in 2000 Walsh soldiered on facilitated by the emergence of internet web access. The 5th (2002) added yet another collateral field of ephemera: commercial covers with or without cachets and advertisements. The rapid proliferation of business stationary reflected the Colony's developing economy and affords time capsule-like views of the products and services provided. With the expansion of the collateral sections the specialized catalogue was now also an indispensable handbook.

The 6th edition (2006) challenged existing Canadian catalogues by incorporating substantial contributions on "New Brunswick, Nova Scotia, British Columbia, Prince Edward Island and Classic Canada to 1951" (NSSC, 2006: 334). It was written by Walsh "with assistance from C.R. McGuire and contributions from Charles J.G. Verge and detailed Canada postal rate information from Brian D. Murphy and with help from Robert C. Smith." McGuire points out "It complements the period that Newfoundland existed as its own country." The cataloguing principle Walsh and Butt introduced in 1988 to enumerate Newfoundland issues continues: "... stamps printed from the same plate and/or with the same design are all listed together under one whole number." As a hefty volume of more than 500 pages, with colour illustrations it is a continuing labour of love for Walsh; a testament to his colleague John G. Butt.

In 2010 the 7th edition, a tome of well over 600 pages, was released; updates continued. Due to its size it has been re-released in two volumes: *Newfoundland Specialized, Vol. I* with 378 pages and *British North America Specialized, Vol. II* with 265 pages. In Vol. I the major addition is Peter de Groot's (deceased in 2010) research dealing with the rate fee structure as found on revenue documents. Now one could finally make sense of the franking found on documents. Volume II contains two additions: postal rates for NB., NS., BC. and PEI. and semi - official Canada airmail issues. The flights covers involving these semi-official issues are placed in sequential and chronological order.

The 8th edition was released in 2012 as two eBooks; **Walsh Newfoundland Specialized Stamp Catalogue** and **Walsh British North America Specialized Stamp Catalogue**. Together they have more than 750 pages of information. The many semi - official flights are now incorporated as well a substantial listing of Canada Government Official Airmail Flights to 1996. Forgery items of Newfoundland stamps as well all the BNA Colonies are added.

Now, the question is: what will a 9th edition contain, not whether?; T.F. Nemec (deceased 2019).

p.s.: by Walsh:

9th edition 2014 has removed the previously listed and separate 1876 - 79 Rouletted issues.

Now they are found under their corresponding dies as found in the First Cents and Second Cents issues.

They were moved because Walsh NSSC lists stamps by die or colour changes not by paper separation techniques.

Because of this the sequence of whole numbering has changed throughout.

Rouletted is a term used when a wheel having slits is employed to cut paper to enable its separation.

The 1897 Cabot Trial Surcharges are renumbered to enable placement into their sequential year of production.

10th edition 2016 has added the major research work on ABNCo, NBNC Co New York Printings 1865 - 1879 offered by Sammy Whaley. Latest discovered items have been added to update his work. Several articles presented. Provided for all issues are informational descriptions and where found the images, many in colour, of the die proofs and sundry developments used to create the finished post office issue; both ecatalogues have this additional feature.

****Renumbering of all Trial Surcharges occurred due to the improved cataloging of the 1897 Queen Victoria Surcharge issue.***

The proper cataloging of the 1897 Trial Surcharges both in red and in red and black provide greater understanding of this issue.*

11th edition 2018 ecatalogues provide more overwhelming information. Die images; articles proliferate.

12th edition 2020 ecatalogues continues to add more detailed information; dies and other findings.

13th edition 2022 ecatalogues continues to add more detailed information; dies and other findings.
*** Major research on 1932 Resources 20.4 mm and 21 mm size and perforation 13.3 x 13.3 proves they were done by Perkins Bacon & Co prior to Waterlow & Sons printing the *Blitz* 1941 Resources issues.***
Offsets observed in 1932 issue indicate two types paper printing presses utilized; wet ungummed; dry gummed.

14th edition 2023 ecatalogues continues to add more detailed information; dies and other findings.
BNA Canada has two massive research findings; see NSSC 114 Admiral inverted overprint proven genuine; and 1937 Mufti coil printing press types.

15th edition 2024 ecatalogues continues to add more detailed information; dies and other findings.
Newfoundland has discovery information on issues of Pence; 1932; 1941 Blitz Printing; 1942 Resources; Revenues.
BNA Canada has additional NSSC 114 Admiral inverted overprint researched information showing it is genuine.
Newfoundland has 980 pages. British North America has 792 pages and with revenue issues as stated.

FOREWORD Colin D. Lewis, FCPS, Swansea, United Kingdom. February 2015 -

I continue to have the pleasure of writing the foreword to the latest updated edition of the *Newfoundland Specialized Stamp Catalogue*. John Walsh maintains the long standing tradition of this catalogue by developing and improving on the information it contains. Whereas many areas of British North America collecting have seen a downturn in interest, that of Newfoundland continues to increase in popularity and this can only continue when quality publications such as this are published.

It is a reflection on the sustained and dedicated efforts of the editor that each new issue of the catalogue includes new information as well as up-to-date revisions and the fine tuning of many of the existing sections. An important addition to this issue is the inclusion of the research data produced by Jean-Claude Vasseur on the 1928 First Publicity Issue, in particular the identification that two printing plates were used to produce the one cent stamp. Accurate, and the latest information is essential to the postal historian, dealer and philatelist alike, whether it is undertaking research, preparing inventory valuations or considering new fields of study. This catalogue is an asset in all these areas and a must have reference for serious collectors and postal historians, as well as professional dealers.

In the last issue the inclusion of tables of pre-stamp postal rates was most welcome and a long overdue addition to the work. It was hoped that inclusion of those rates would have stimulated users of the catalogue to forward updated information to the editor, as gleaned from their own collections and records. The accuracy of information can only be improved through users challenging the detail recorded. There are very few extant records that contain early rates and much of the included information has been gleaned from surviving correspondence. There will undoubtedly be amendments to this section as new information comes to light so if you have any suggestions please communicate them to the editor. The importance of having all the data, in respect of rates, in a single publication makes it easier for the researcher to quickly locate information whilst it simplifies updating and amending tables when new findings are brought to the notice of the catalogue editor.

The quality of a publication is best judged on the information it contains and for that to happen it must attract contributions from people who are experts in their field. To that end *Newfoundland Specialized Stamp Catalogue*, or more appropriately the editor, achieves that goal as he continuously seeks out people with advanced knowledge to contribute to the work.

John Walsh, the catalogue editor, has spent many years of dedicated research in seeking out new fields that would benefit collectors and he should be deeply thanked for bringing new areas of collecting and interest to the forefront of Newfoundland collecting.

“It is incredible you have reached the production of the 15th catalogue and how it has grown in content. A superb illustrated catalogue again and it does make me drool when I see such quality”.



‘Chipman Twins’. Provenance: Colin D. Lewis
April 27, 1861 paid 6½ Pence Sterling per ½ ounce from Harbor Britain to Boston and 5 Cents US postage collect fee Boston to North Oxford Mass. Redirected to Essex Vermont. The bisected 8 Pence is equal to 4 Pence Sterling whilst the 3 Pence Currency converts to 2½ Pence Sterling.



‘Chipman Twins’. Provenance: Dale-Lichtenstein; Foxbridge; Dr. Chan; Robertson

TABLE of CONTENTS		page
BRIEF SURVEY of the EIGHT EDITIONS by Thomas F. Nemec, Ph.D.		4
FOREWORD by Colin D. Lewis, FCPS Swansea, United Kingdom		5
NUMBERING SYSTEM EXPLANATION		22
VALUATION RATIONALE		23
ABBREVIATIONS		24
ACKNOWLEDGMENTS		25
NEWFOUNDLAND POSTAGE STAMPS, 1857 — 1947: A BRIEF HISTORICAL AND ICONOGRAPHIC STUDY by Thomas F. Nemec, PhD		26
NEWFOUNDLAND’S STAMP DEALERS by Terrance R. Harris		38
MAP LOCATIONS of ST. JOHN’S POST and SUB OFFICES by John G. Butt; David Piercey		39
COMPARATIVE TABLE OF STAMP CATALOGUE NUMBERS by C. R. McGuire		41
NEWFOUNDLAND POSTAGE STAMPS		
1857	First Pence issue	49
1860	Second Pence issue	51
1861	Third Pence issue + <i>pence size articles</i>	52, 53, 57
1865 - 1910	Geometric Cancells <i>research article by David Piercey</i>	66
1865 - 1879	First Cents issue	71
1868 - 1879	Second Cents issue + articles on <i>‘tumbling stones’; ‘blue raindrops’; ‘major misplaced reentry’</i>	75 78; 80; 81
1880 - 1898	British American Bank Note Co.(Montreal Printing) + articles <i>‘half cent dog’; ‘falling blue ice cubes’;</i>	84 85; 91
1890	Queen Victoria Info <i>Newfoundland stamps marked SPECIMEN</i> Info <i>Analysis Nfld. “aniline inks” by Richard H. Judge</i> Info <i>Newfoundland mail FORWARDERS</i>	95 95 95 96
1897	John Cabot & Jubilee issue	97
1897	1890 Queen Victoria articles on <i>‘Red Trial Surcharge; Red and Black Surcharge’; ‘Missing Surcharge’</i>	100; 110; 112
1897	1890 Queen Victoria Trial Surcharges	116
1897	1890 Queen Victoria Provisional Surcharge issue	117
1897 - 1901	Royal Family issue	118
1908	Map Stamp issue	122
1897 - 1908	Royal Family & Map issues Requisition Orders with SPECIMEN	123, 124
1910	John Guy issue (lithographed)	125
1898 - 1901	Newfoundland Duplex cancels <i>researched by Carl Munden</i>	131
1911	John Guy issue (engraved)	134
1911	Royal Family issue	135
1897 - 1947	Postage Paid Cancells	142
1919	Caribou issue + <i>15¢ Prussian blue ink research article by R.H. Judge</i>	143; 147
1918 - 20	Cabot Trial Surcharges	154
1920	Cabot Provisional Surcharges	154
1923 - 1924	Pictorial issue	155
1928	First Publicity issue	165
1929 - 1931	Second Publicity issue (Re - engraved)	177



1920 Surcharge; partially missing

1929	Pictorial Issue Trial Surcharge article	187
1929	Pictorial Issue Trial Surcharges	189
1929	Pictorial Issue Provisional Surcharge	189
1931	Third Publicity issue (Re - engraved & watermarked)	190
1932	Info articles	<i>Proof perf. 13.3 x 13.3 and 21 mm stamps originally done by Perkins Bacon & Co</i> 194
		<i>Follow up proof article on 20.5 mm & 21 mm were done by Perkins Bacon & Co</i> 206
1932 - 1938	First Resources issue	215
1933	L. & S. Post. Provisional Overprint	236
1919 - 1932	Booklets	237
1933	Sir Humphrey Gilbert issue	239
1935	Silver Jubilee King George V issue	245
1937	Coronation King George VI issue	245
1937	Long Coronation issue	246
1938	Royal Family issue	254
1939	Royal Visit issue	258
1939	Royal Visit Provisional Surcharges	258
1941	Sir Wilfred Grenfell issue	258
1942 - 1949	Second Resources issue	259
1943	Memorial University College issue	269
1946	Memorial University College Provisional Surcharge	269
1947	Princess Elizabeth	270
1947	450th Anniversary John Cabot	271
	Info article on 2¢, 3¢, 4¢ Blitz Printing post May 1941 to pre February 1942	272
	Extraction of John Ayshford published written research on <i>Last Issue of Newfoundland</i>	276
	Info article on quantity of double pane sheets printed; article on Blitz Printing stamps	294
1939	Postage Due issue	298
1897 - 1942	Dignitary Presentation Cards (DPC)	299

NEWFOUNDLAND AIRMAIL STAMPS

1919	Hawker Airmail Overprint	300
1919	Martinsyde Airmail Overprint	300
1919	Alcock and Brown Airmail Surcharge	300
1921	Halifax Airmail Overprint + <i>article on invert offsets</i>	301; 302
1922	Vickers-Vimy Airmail Essays	306
1927	De Pinedo Airmail Overprint	306
1930	Columbia Airmail Surcharge	306
1931	Airmail issue (unwatermarked)	307
1931	Airmail issue (watermarked)	310
1932	Dornier Do - X Airmail Surcharge	310
1932	Wayzata Essay + <i>research article by Jerome C. Jarnick</i>	311
1933	Labrador Airmail issue	313
1933	Balbo Airmail Surcharge + <i>article on correct first day issue</i>	316; 317; 321
1943	Plane Over St. John's Airmail issue	316
1919 - 1940	Unissued Airmail Essay Die Proofs of 1919 -23; 1931; 1940	322
1919 - 1947	First Flight Covers	333



NEWFOUNDLAND POSTAL STATIONERY

1905	Officially Sealed Dead Letter Office	{labels, cancels, envelopes}	337
1873 - 1933	Post Cards		339
1889	Post Bands		342
1889	Envelopes		343
1938	Business Reply Envelopes		344
1938	Registered Letter Envelopes		345
1906 - 1941	International; Imperial Reply Coupons		345
1944 - 1948	Armed Forces Air Letter Sheet Envelopes		346
1941	Canadian Armed Forces Cancels	CAPOs	347
1941	American Armed Forces Cancels		347
1938	Registration Gummed Labels		348
1918 - 1948	Postal Slogans		349



First Day Use; message side confirms date
courtesy Brian C. Bursey

NEWFOUNDLAND POSTAGE METER MACHINES

1928 - 1949	Midget Meter	351
1928 - 1949	Neopost Meter	351
1947 - 1949	Pitney-Bowes Meter	352

TABLE of PLATE NUMBERS	353
------------------------	-----

TABLE of MARGIN IMPRINT INSCRIPTIONS	357
--------------------------------------	-----

NEWFOUNDLAND STAMPLESS POSTAL RATE TABLES	<i>from research done by Colin D. Lewis</i>	359
1865 - 1873 Pence to Decimal Conversion Interpretations	<i>from research by Colin D. Lewis</i>	364
NEWFOUNDLAND GENERAL POSTAL RATE TABLES	+ Yearbook and Almanac pages	370

NEWFOUNDLAND INLAND REVENUE STAMPS

1898; 1907; 1911; 1938 - 1964 Revenue Issue articles		395; 399; 401
1898	Queen Victoria issue	403
1907	King Edward VII issue	404
1911	King George V issue (with imprint)	405
post 1920	King George V issue (no imprint)	405
1922	Revenue Trial Essays	406
1937	Revenue Trial Essays	406
1938 - 64	Caribou issue {perforation changes denote year of issue}	410
	1938 perf. 13.9 x 13.9, 14.3 x 14.3; 1942 perf. 12 x 12; 1964 perf. 13.25 x 13.5	
1963	Caribou Provisional Surcharges	414

NEWFOUNDLAND REVENUE DUTY RATE TABLES	<i>from research by Peter de Groot</i>	415
---------------------------------------	--	-----

	Perfin Styles	422
1927	Transportation Tax information	423
1927	Transportation Tax	424
1914	Money Order Stamp Tax only Overprint	424

NEWFOUNDLAND CUSTOM DUTY STAMPS

1925	Edward, Prince of Wales issue	425
1938	Caribou issue	425
1932	Board of Liquor Control Relief Tax Stamp	425
1938	Beer Stamp	425

NEWFOUNDLAND WAR SAVINGS STAMPS

1940	War Savings Stamp issue	426
1946	National Savings Stamp issue	426
1958	Newfoundland Savings Bank Overprint	426
1940 - 64	War Savings Certificate Card Booklets <i>with help from Terrance R. Harris</i>	426
1940 - 64	War Savings Certificates	426

NEWFOUNDLAND PERFIN STAMPS

Lists of stamps having Company Perfins <i>from research done by Barry C. Senior</i>	427
---	-----

NEWFOUNDLAND TOBACCO TAX STAMPS

1904	King Edward VII Cigarette issue	431
1904	Provisionals — 1904 King Edward VII Cigarette Surcharges	431
1907	King Edward VII Cigarette issue	432
1907	Provisionals — 1907 King Edward VII Cigarette Surcharges	432
1913	King George V Cigarette issue	432
1913	Provisionals — 1913 King George V Cigarette Surcharges	432
1913	Provisional — Cut Tobacco Cigarette Issue Surcharges	433
1922	Small Strip Cigarette Style Series A, B, C	433
1922	Provisionals — 1922 Small Strip Cigarette Surcharges Series A, B	433
1926	Small Strip Cigarette Style Series A	433
1926	Provisionals — 1926 Small Strip Cigarette Surcharges Series A	433
1928	Small Strip Cigarette Style Series A	434
1928	Provisionals — 1928 Small Strip Cigarette Surcharges Series A	434
1937	King George VI Cigarette issue	434
1937	Provisionals — 1937 King George VI Cigarette Surcharge	434
1939	Large Caribou Cigarette issue	434
1939	Provisional — 1939 Large Caribou Cigarette Surcharge	434
1940	Small Caribou Cigarette issue	435
1948	Provisional — 1940 Small Caribou Cigarette Surcharge	435
1940	Small Caribou Cigarette issue. Imperforate	435
1941	Military Canteens (Large) Cigarette issue	435
1941	Provisionals — 1941 Military Canteens (Large) Overprints	435
	Military Canteens (Small) Cigarette issue	435
1945	Cigarette Importation (Small Size)	436
	Cigarette Importation (Large Size)	436
	Provisionals — Cigarette Importation (Large Size) Overprints	437
1913	Cut Tobacco with Newfoundland Dog issue	437
	Provisional — 1907 King Edward VII Cut Tobacco Overprint	437
	Provisional — 1913 King George V Cut Tobacco Surcharges	437
1927	Tobacco Excise Large Strip Style	438
1937	Tobacco Excise Small Strip Style	438

1945	Military and Naval Canteens Tobacco issue	438
	First Tobacco Importation Strip Type	439
	Second Tobacco Importation Strip Type	439
	Third Tobacco Importation Strip Type	439
	Fourth Tobacco Importation Strip Type	440
	Plug Chewing Tobacco	440
	LIST of NEWFOUNDLAND TOWN and OUTPORT POST OFFICES and CANCEL TYPES	441
	LIST of ST. JOHN’S POST OFFICE CANCELLATIONS; and Locations by Electoral Districts	459
	TOWNS with TYPES of some DIFFERENT STYLISTIC CANCELS	460
	LIST of LABRADOR POST OFFICE CANCELLATIONS	461
	RAILWAY T. P. O. and R. P. O. CANCELS <i>offered from research done by Lewis M. Ludlow & Brian T. Stalker</i>	463
	NEWFOUNDLAND FORGERIES <i>offered from research done by Richard Gratton</i>	477
	NEWFOUNDLAND FAKES and FORGERIES <i>offered from research done by Ed Wener</i>	492
	MOENS NEWFOUNDLAND FAKE CORRECTIONS <i>offered from research by Gerhard Lang-Valchs</i>	522
	NEW YORK PRINTINGS 1865 - 1879 CENTS COVER STUDY <i>offered from research done by Sammy Whaley</i>	529
	NEWFOUNDLAND COINS <i>offered with help from John O’Mara</i>	738
	NEWFOUNDLAND PICTORIAL POSTCARDS (viewcards) Introduction	743
	Multi-Views and <i>research offered by Brian C. Bursey</i>	744
	C.T. American Art Coloured	747
	Atkinson Ltd, Bay Roberts	747
	Atlas Society	747
	Ayre and Sons Florizel Series	748
	Ayre and Sons H Series	748
	Ayre and Sons (238628 – 238639)	748
	Ayre and Sons View Folders	748
	Ayre and Sons	749
	Ayre and Sons (1000 Series)	749
	Ayre and Sons (1100 Series)	753
	Ayre and Sons (1200 Series)	756
	Ayre and Sons (1300 Series)	757
	Ayre and Sons (1400 Series)	761
	Ayre and Sons (1500 Series)	762
	Ayre and Sons (2000 Series)	763
	Ayre and Sons (3000 Series)	764
	Ayre and Sons (3100 Series)	765
	Ayre and Sons (3200 Series)	765
	Ayre and Sons (3300 Series)	766
	Ayre and Sons (3600 Series)	766
	Ayre and Sons (3800 Series)	767
	Ayre and Sons (3900 Series)	768
	Ayre and Sons (4100 Series)	769

Ayre and Sons (4200 Series)	770
Ayre and Sons (5200 Series)	770
Ayre & Sons (43448 and 433990 Series and 474808)	770
Bagg Bros., Curling	771
Bairds Souvenir Miniature Postcards	771
C. W. Bartlett, Petries	771
Barnes and Company	771
B. Basha, Photographer	771
W. R. Bidgood, R.N.	772
C. D. Bishop	772
E. I. Bishop Photo Series	773
Botwood Art Studio – E. J. Lanning	775
Bowring Brothers	776
Fred’K. M. Brooks	776
William Brown	776
W. F. Butt	776
Garrett Byrne	776
Garrett Byrnes Series	777
Byrne’s, St. John's, N.F. Series	778
Byrne’s, St. John's, N.F. Series (Numbered)	779
Canada Gift and Novelty	780
Canadian Post – Card Co. Ltd.	780
W. P. Cannan, Grand Rapids, Educational Series	781
Cape Breton Postcard Co.	781
J. P. Cash, St. John's	781
Clarke Steamship Company Ltd	781
Colonial & Continental Church Society	781
P. H. Cowan P.H.C. (1 – 19) Low Numbers	781
P. H. Cowan P.H.C. (200 – 262) High Numbers or without numbers	782
P. H. Cowan, Printed in France	783
Cox & Co., St. John’s	783
L. Clyde Davidson & Co., Halifax	783
Dicks and Company Glossy Coloured P. C. Series	783
Dicks and Company, 149 / Series and 118 / Series	784
Dicks and Company, 150 / Series	784
Dicks and Company Ltd., St. John’s, Newfoundland	784
Dicks and Company, Collotype P.C. Series	786
Dicks and Company	786
Dicks and Company (100 Series)	786
Dicks and Company (1200 Series)	786
Dicks and Company Pictorial Series (1300 Series)	787

Dicks and Company Pictorial Series (Printed in England)	788
Dicks and Company, Glossy Photo, Postcard Series	788
Dicks and Company, Sealing Series	789
Dicks and Company, Ter – Centenary Series	789
Dicks and Company, (Printed in Britain)	790
Dicks and Company, Copyright (Newfoundland Souvenir Post Card N.S.P.C.)	791
Dicks and Company, Copyright (Real Photo Series)	793
The Douglas Co. (Studio)	794
Dunlap	794
J. E. Evans Port Rowan, Ont.	794
H. J. Feaize, Carbonear	795
Furness Warren Line, Liverpool	795
Garland <i>PRECURSORS</i>	796
S. E. Garland	796
Garland Chromo – Litho Series	797
Garland Glossy Collotype Series	798
Garland Glossy Colour Series	801
Garland Halftone Series	802
Garland Moonlight Series	803
Garland Photo Iris Series	803
Garland Photolet Series	804
Garland Photogravure Series	805
Garland Platinum Series	806
Garland Series	807
Garland Tinto Gravure Series	808
Garland Sport and Pastime Series	809
Garland Statesmen Series	810
Gray and Goodland’s, St. John’s	810
Grenfell Association [redo: seven types listed]	811
Guardian Associates Ltd.	811
W. Harbrow, Iron Building Works, London	812
C. W. Hawley, Photographer	812
J. C. M. Hayward, Grand Falls	812
J. W. Hayward, Montreal	812
S. J. Hayward, Montreal for Canadian Railway News Company	812
T. B. Hayward, St. John's	813
W. E. Hebb, Halifax, N.S.	817
H. V. Henderson, West Bathurst N.B.	817
Herald Print	817
Hermann Post Card Co	817
HLM	817

Hodge Bros., Twillingate, N.F.	817
Imprimerie Rotogravure S.A., Geneva	818
Jones, Hr. Grace	818
Kaiden-Keystone photo	818
Wm Kennedy & Sons (C.K.)	818
Knowlings Newfoundland Series	818
E. C. Kropp Co., Milwaukee	819
Lacey, the Post Card Magnate	820
Arthur Lane Studios Toronto	820
Walter E. Leroux	820
Lighthouse Literature Mission	820
W. J. Lockyer	820
Locomotive Publishing Company, Ltd. London	820
Marshall Studios Ltd.	821
McCoy Printing Co. "Acadian Series"	821
McCoy Printing Co. Moncton, N.B.	821
MacFarlane	822
C. A. Maijer Supply Co. And Travelling Photographer	823
C. L. March Co., St. John's	823
T. M. Morrow, St. John, N.B.	823
Moravian Mission [major redo]	823
Newfoundland Pictorial Post Card Co., 1904	824
Newfoundland Regiment	824
W. Notman and Son	824
Novelty Manufacturing and Art Co. Ltd. Montreal	824
Newfoundland Quarterly, St. John's, Pub 1958	825
News Publishing Co. Limited Truro, N.S.	825
S. R. Oakley	825
C. J. O’Keefe	825
P. O’Mara, Druggist St. John’s Nfld	825
D. (Doris) Parsons Corner Brook Nfld.	825
J. C. Parsons, Corner Brook and also St. John’s	826
R. T. Parsons	828
S. H. Parsons #1700; #X9557; 1914 Disaster	829; 830
S. H. Parsons	830
S. H. Parsons (63883 - 63926)	830
S. H. Parsons X5317	833
Parsons Art Store	834
Parker & Monroe Ltd.	834
Peco	834

Peco or Photogelatine Engraving Numbered	836
Pugh Mfg. Co.	840
Public Benefit Store, Bonne Bay, Nfld	840
Real Photo	840
R. Roberts, Bonne Bay NF	840
C. & B. Ross, Harbor Grace	841
Rothwell & Bowring Limited St. John’s Newfoundland	841
Royal National Mission to Deep Sea Fishermen [redo: three types listed]	842
Rumsey & Co. Ltd. Toronto	842
SA, Montreal	843
Souvenir Program Coronation Regatta...St. John’s, Nfld [1911]	843
W. E. Stirling, Publisher	843
The Mayrose Co Publishers, Linden N.J.	843
The Post Card Agency	843
The Royal Stores Limited	843
C. R. Tibbo	844
Raphael Tuck & Sons, Coloured Postcards, Cecil S. Ashdown, Artist	845
Raphael Tuck & Sons Ltd, "Oilfacsim", B. F. Gribble, Artist	845
Raphael Tuck & Sons Ltd, Series I and II [special for British Empire Exhibition 1924]	845
Raphael Tuck & Sons Ltd	845
Raphael Tuck & Sons Ltd Real Photograph [Labrador Series 1, 2, 3]	845
Raphael Tuck & Sons Real Photograph [different copyrights]	846
Raphael Tuck & Sons Real Photograph St. Anthony - Int’l. Grenfell Assoc. HQ [Type 1, 2]	846
Raphael Tuck & Sons “Oilette”, “Empire” series [6 listed]	847
T. I. C.	848
Uitgave Broederhuiszeist (Netherlands)	849
Universal Postal Union	849
Valentine and Sons, Toronto and Montreal	849
Verlag Der Bildstelle Der Herrnhuter Missionshilfe E.V. Herrnhut SA	850
Verlag Der Missionsbuchhandlung, Herrnhut	850
Verlag Missionsverwaltung Lichfbildabfeilung, Herrnhut SA	851
Warburgs Kunst-Forlag Kobenhaven Eneret	851
Ward & Co., Montreal	852
Warwick Bros.	852
Western Star	852
VELOX Postcards; NOKO Postcards; AZO Postcards	853
AGFA ANSCO Postcards; EKC Postcards	853
Unknown Real Photo Postcards	853
Selection of 46 Small Publishers of Newfoundland Postcards	854
NEWFOUNDLAND ADVERTISING BUSINESS & CORNER CARDS Introduction	857
Alphabetic listings showing BUSINESS NAME; LOCATION; MESSAGE	858
NEWFOUNDLAND RATION STAMPS <i>booklet provided by Thomas F. Nemec, Ph.D.</i>	969