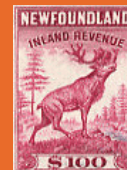


# NEWFOUNDLAND SPECIALIZED Stamp Album 2023



Andrew L. Winter

John M. Walsh, FRPSC



Dear Collector,

We thank you for choosing our Stamp Album. This album reflects the 2023 British North America Specialized Stamp Catalogue numbering system. Increasingly, collectors, dealers and auction firms rely on the Catalogues to accurately describe and estimate the market value of Newfoundland, British North America and Canada to 1951 stamps and related ephemera.

We recognize that every collector has different preferences for mounting their collection. Based on decades of experience, it is recommended you mount your album pages inside clear acetate page holders that have three holes in the acetate sheet margin. They allow you to remove pages for various purposes, including exhibition desires.

Enjoy your collecting and have fun.

Andrew L. Winter & John M. Walsh, FRPSC  
www.nfldstamps.com  
c/o Walsh's Philatelic Service  
9 Guy Street  
St. John's, Newfoundland  
Canada A1B 1P4

## 1865-1875 FIRST CENTS Issue

engraved; no watermark; pelure paper; perf 12 x 12  
American Bank Note Co., New York

With the advent of decimal currency in 1865 a new series of postage stamps were required.

To facilitate this problem and promote the important symbols of Newfoundland, the First Cents Issue depicted the fishery, sealing and commerce as well as honouring the monarchy



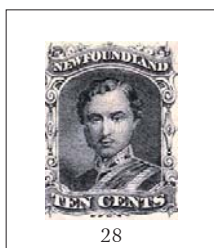
26  
2¢ green  
Codfish  
1866



27  
5¢ brown  
Seal  
1866



30  
13¢ orange brown  
Fishing Vessel  
1866



28  
10¢ black  
Prince Albert  
1865



29  
12¢ pale red brown  
Queen Victoria  
1865



31  
24¢ blue  
Queen Victoria  
1866

## 1868-1875 SECOND CENTS Issue

engraved; no watermark; perf 12 x 12  
National Bank Note Co., New York  
American Bank Note Co., New York



32  
1¢ violet  
Prince of Wales  
1869



33  
1¢ brown lilac  
Prince of Wales  
1871



34  
3¢ vermilion  
Queen Victoria  
1870



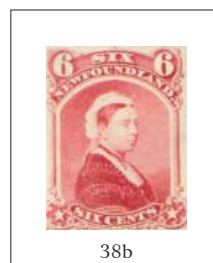
35  
3¢ blue  
Queen Victoria  
1873



38  
6¢ dull rose  
Queen Victoria  
1871

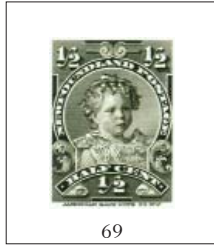


36  
5¢ black  
Seal  
1869



38b  
6¢ bright rose  
Queen Victoria  
1874

**1897-1901 ROYAL FAMILY**  
 engraved; no watermark; perf 12 x 12  
 American Bank Note Co., New York



69  
 ½¢ olive  
 Prince Edward  
 1898



70  
 1¢ red  
 Queen Victoria  
 1897



71  
 1¢ yellow green  
 Queen Victoria  
 1898



71a  
 1¢ blue green  
 Queen Victoria



72  
 2¢ orange  
 King Edward VII  
 1897



73  
 2¢ vermilion  
 King Edward VII  
 1898



74  
 3¢ orange  
 Queen Alexandra  
 19.3 x 25.9 mm  
 1898



74a  
 3¢ orange  
 Queen Alexandra  
 19.5 x 25.7 mm  
 1902



74b  
 3¢ orange  
 Queen Alexandra  
 19.3 x 25.4 mm  
 1905



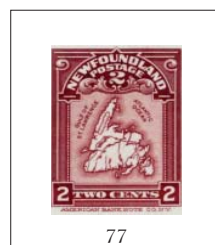
75  
 4¢ violet  
 Duchess of York  
 1901



76  
 5¢ blue  
 Duke of York  
 1899

**1908 MAP Issue**  
 engraved; no watermark; perf 12 x 12  
 American Bank Note Co., New York

In 1908 the S.S. Sylvia carrying a consignment of the 2¢ and 5¢ Royal Family issue was wrecked en route to St. John's. The stamps washed ashore off of Cuttyhunk Island, Mass, most of them were recovered, however some of them were offered for sale. The Newfoundland post office had the Map stamp produced fearing the loss of revenue due to the illegal use of salvaged stamps



77  
 2¢ carmine  
 Map of Newfoundland

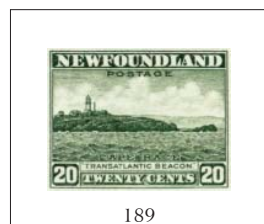


77a  
 2¢ rose carmine  
 Map of Newfoundland

## 1932-1938 FIRST RESOURCES Issue

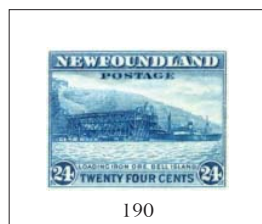
engraved; coat of arms watermark; perf 13.5 x 13.5

Perkins Bacon & Co., London



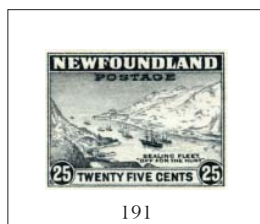
189

20c gray green  
Beacon at Cape Race



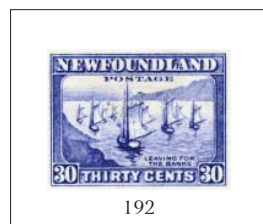
190

24c blue  
Bell Island



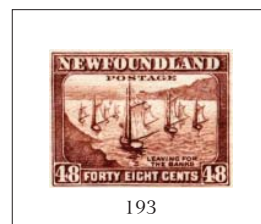
191

25c gray  
Sealing Fleet



192

30c ultramarine  
Fishing Fleet



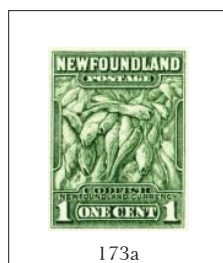
193

48c red brown  
Fishing Fleet

## 1932-1938 FIRST RESOURCES Issue

engraved; coat of arms watermark; perf 13.2 x 13.2

Perkins Bacon & Co., London



173a

1c green  
Codfish



175a

2c rose DIE I  
King George V



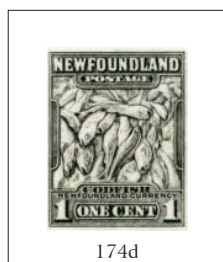
178a

3c orange brown  
Queen Mary

## 1932-1938 FIRST RESOURCES Issue

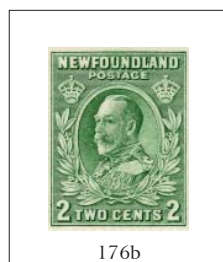
engraved; coat of arms watermark; perf 14.2 x 14.2

Perkins Bacon & Co., London



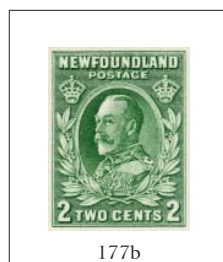
174d

1c gray black  
Codfish



176b

2c green DIE I  
King George V



177b

2c green DIE II  
King George V



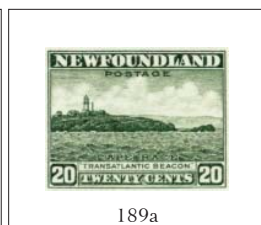
182b

5c deep violet DIE II  
Caribou



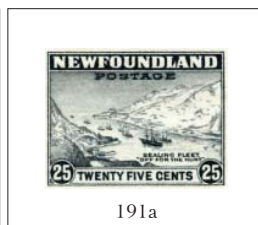
188a

15c magenta  
Whitecoat Seal



189a

20c gray green  
Beacon at Cape Race



191a

25c gray  
Sealing Fleet



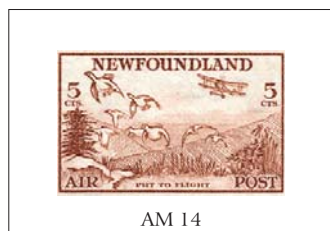
192a

30c ultramarine  
Fishing Fleet

## 1933 LABRADOR AIR MAIL Issue

engraved; coat of arms watermark; various perfs  
Perkins Bacon & Co., London

This issue denotes the natural resources of Labrador and the isolation of those who live there



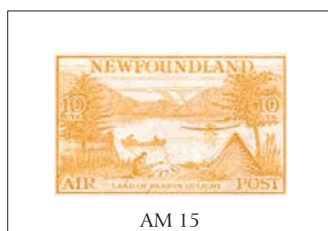
AM 14

5¢ reddish brown  
Put to Flight  
14.3 x 14.3



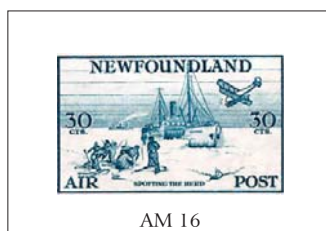
AM 14a

5¢ reddish brown  
Put to Flight  
13.8 x 13.8



AM 15

10¢ yellow orange  
Land of Heart's Delight  
11.5 x 11.5



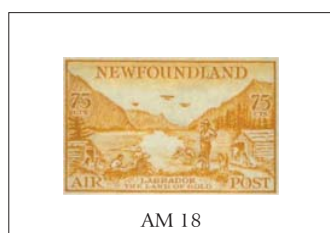
AM 16

30¢ blue  
Spotting the Herd  
14.3 x 14.3



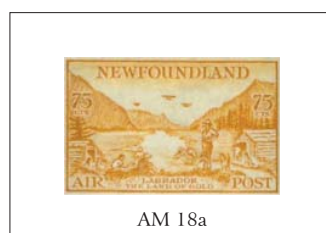
AM 17

60¢ green  
News From Home  
11.5 x 11.5



AM 18

75¢ bistre  
Labrador, Land of Gold  
14.3 x 14.3



AM 18a

75¢ bistre  
Labrador, Land of Gold  
13.8 x 13.8

## 1943 AIR MAIL Issue

engraved; no watermark; perf 12 x 12  
Canadian Bank Note Co.



AM 20

7¢ ultramarine  
Plane over St. John's

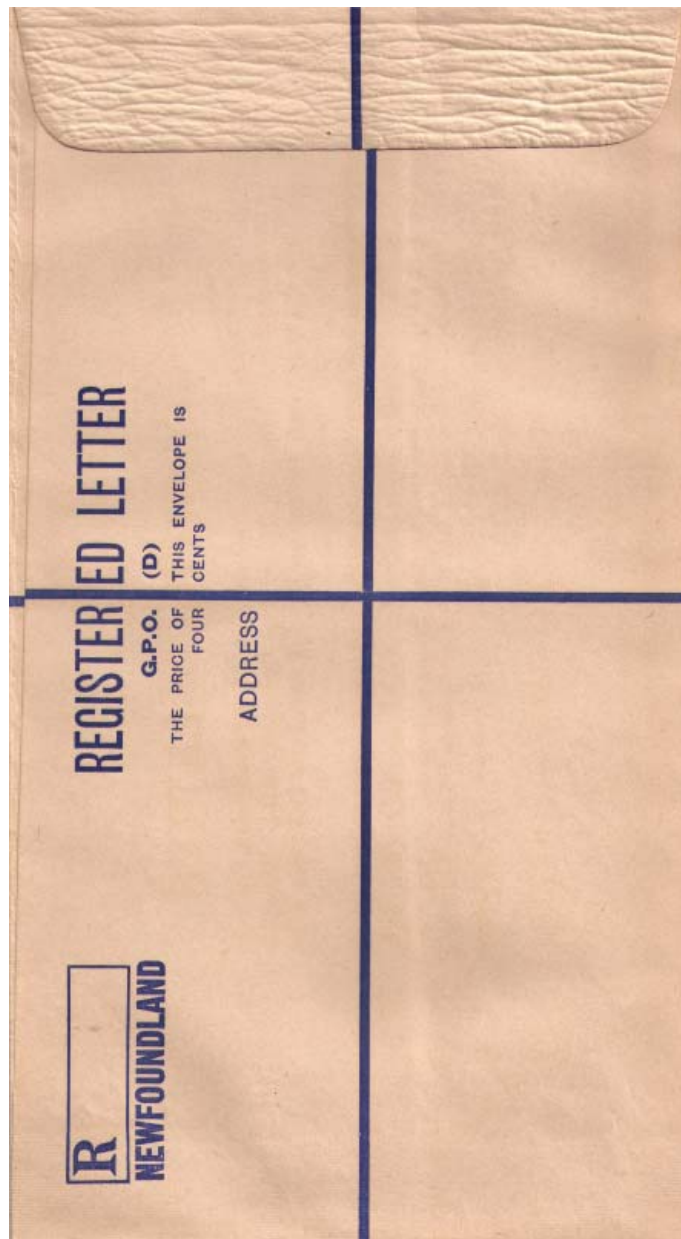


AM 20a

7¢ ultramarine aniline  
Plane over St. John's

# 1938 REGISTERED ENVELOPE

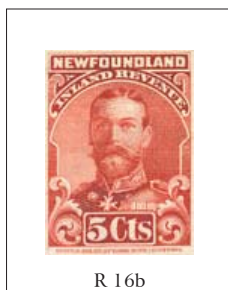
no watermark; size measurements not precise  
McCorquodale & Co. Ltd., Wolverton



RE 4  
D Size  
costing 4¢

## 1911 KING GEORGE V Issue

engraved; no watermark; perf 11 x 11; with imprint  
British American Bank Note Co., Ottawa



R 16b

5¢ vermilion



R 17a

10¢ olive



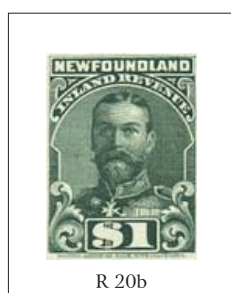
R 18b

25¢ blue



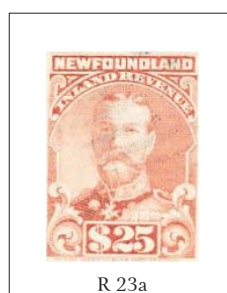
R 19b

50¢ black



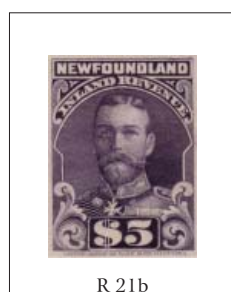
R 20b

\$1 green



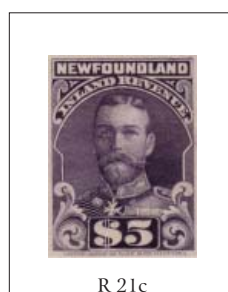
R 23a

\$25 salmon



R 21b

\$5 violet



R 21c

\$5 violet  
11 x 12

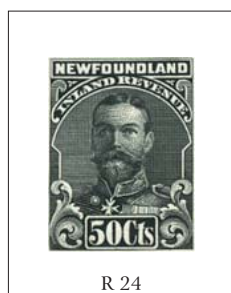


R 21d

\$5 violet  
12 x 11

## 1920 KING GEORGE V Issue

engraved; no watermark perf 11 x 11; without imprint



R 24

50¢ black



R 25

\$1 green