

These Gifts I Bring Thee



WALSH

2023

NEWFOUNDLAND SPECIALIZED

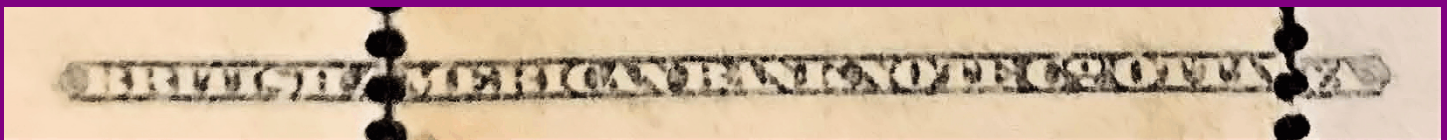
Stamp Catalogue



14th edition



NSSC R 5 verso mirror



NSSC R 5 verso mirror enhanced

WALSH

NEWFOUNDLAND SPECIALIZED

Stamp Catalogue 14th edition

John M. Walsh, FRPSC

John G. Butt (1939 - 2000)



featuring: *essays, die proofs, postage & revenue stamps, articles, flight covers, postal rates, postcards, cornercards*

research provided and offered by **Jean-Claude Vasseur**, FRPSL, AEP

fakes and forgeries provided through research by **Ed Wener**

forgeries provided through research by **Richard Gratton**, FRPSC

Moens Newfoundland fake corrections offered from research by **Gerhard Lang-Valchs**

company perfins provided through research by **Barry C. Senior**

die proof images, quantities provided and offered by **Glen Lundeen**

revenue rate findings provided through research by **Peter de Groot**

ration stamp/coupon information contributed by **Thomas F. Nemeč**, Ph.D

stampless postal rates provided through research by **Colin D. Lewis**, FCPS

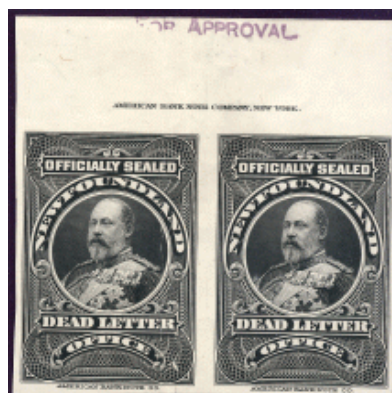
tobacco tax images contributed by **John B. Harper** and **Terrance R. Harris**

die proofs; colour trials provided from extracted research of **Kenneth Minuse** and **Robert H. Pratt**

ABNCo, NBNCo New York Printings Cents covers 1865 - 1879 provided through research by **Sammy Whaley**

Railway T.P.O. and R.P.O. cancels provide through research by **Lewis M Ludlow** and **Brian T. Stalker**, FCPS

postcard corrections offered by **Brian C. Bursey**; *improved Raphael Tuck listings* provided by **David Ogden**



Walsh Newfoundland Specialized Stamp Catalogue

Walsh's Philatelic Service 9 Guy Street, St. John's,
Newfoundland, Canada A1B 1P4

voice: 1-709-685-0560

email: info@nfldstamps.com site www.nfldstamps.com

© 1988 First Edition	ISBN 0 — 9693434 — 0 — X
© 1992 2 nd Edition	ISBN 0 — 9693434 — 1 — 8
© 1995 3 rd Edition	ISBN 0 — 9693434 — 2 — 6
© 1998 4 th Edition	ISBN 0 — 9693434 — 3 — 4
© 2002 5 th Edition	ISBN 0 — 9693434 — 4 — 2
© 2006 6 th Edition	ISBN 0 — 9693434 — 5 — 0
© 2010 Combined 7 th Edition version	ISBN 978 — 0 — 9693434 — 7 — 9
© 2010 Nfld. Specialized 7 th Edition vol. I	ISBN 978 — 0 — 9693434 — 8 — 6
© 2010 BNA Specialized 7 th Edition vol. II	ISBN 978 — 0 — 9693434 — 9 — 3
published as eCatalogues starting in 2012	
© 2012 Walsh Newfoundland Specialized 8 th Edition	ISBN 978 — 0 — 9876862 — 2 — 0
© 2012 Walsh British North America Specialized 8 th Edition	ISBN 978 — 0 — 9876862 — 3 — 7
© 2014 Walsh Newfoundland Specialized 9 th Edition	ISBN 978 — 0 — 9876862 — 6 — 8
© 2014 Walsh British North America Specialized 9 th Edition	ISBN 978 — 0 — 9876862 — 7 — 5
© 2016 Walsh Newfoundland Specialized 10 th Edition	ISBN 978 — 0 — 9876862 — 8 — 2
© 2016 Walsh British North America Specialized 10 th Edition	ISBN 978 — 0 — 9876862 — 9 — 9
© 2018 Walsh Newfoundland Specialized 11 th Edition	ISBN 978 — 1 — 988823 — 00 — 3
© 2018 Walsh British North America Specialized 11 th Edition	ISBN 978 — 1 — 988823 — 01 — 0
© 2020 Walsh Newfoundland Specialized 12 th Edition	ISBN 978 — 1 — 988823 — 02 — 7
© 2020 Walsh British North America Specialized 12 th Edition	ISBN 978 — 1 — 988823 — 03 — 4
© 2022 Walsh Newfoundland Specialized 13 th Edition	ISBN 978 — 1 — 988823 — 04 — 1
© 2022 Walsh British North America Specialized 13 th Edition	ISBN 978 — 1 — 988823 — 05 — 8
© 2023 Walsh Newfoundland Specialized 14 th Edition	ISBN 978 — 1 — 988823 — 06 — 5
© 2023 Walsh British North America Specialized 14 th Edition	ISBN 978 — 1 — 988823 — 07 — 2

at philatelic exhibitions the NSSC has received numerous awards and recognition:

VERMEIL — INDIPEX 2011; PACIFIC EXPLORER AUSTRALIA 2005

VERMEIL — WORLD STAMP CHAMPIONSHIP SINGAPORE 2004

LARGE SILVER — ESPANA 2004 VALENCIA; PACIFIC'97 SAN FRANCISCO; WASHINGTON 2006

SILVER — STAMP SHOW 2000 LONDON; ESPANA 2000 MADRID



Collectors Club Chicago prestigious PRATT AWARD 1998

VERMEIL with PRIX d' HONNEUR — C3NPLE '95

*"This is an exceptional example of a specialized catalogue.
Perhaps all the information one would want in such a title."
Canada's Third National Philatelic Literature Exhibition '95*



SILVER MEDAL — PHILITEX '92

"The first true specialized catalogue of recent days. Considerable depth." Philitex '92, New York

"... the most significant tool a serious collector of Newfoundland philately can own."

"The NSSC is much more helpful for Newfoundland postal historians than other standard catalogues."
BNA Topics Vol. 59, No. 3, July-September 2002

catalogue values are provided in *United States dollar*, with no fractions

A special *thank you* is offered to *Ralph Grothe* for his help in the printing of past editions.
Thank you to my friend Thomas F. Nemeč for his invaluable editorial contributions since 1988.
With the help of Andrew L. Winter these eCatalogue editions have come to fruition.
Thank you very much Andrew.

author John M. Walsh is the recipient of six Collectors Club Chicago prestigious PRATT AWARDS
and in 2016 the Royal Philatelic Society Canada impressive GELDERT MEDAL
and in 2021 the Canadian Philatelic Society of Great Britain esteemed FOUNDERS TROPHY

*"Before your philatelic happiness has pass
Step in and take a fulfilling glance!"*

The Newfoundland Specialized Stamp Catalogue (NSSC):

A Brief Survey of the Eight Editions by Thomas F. Nemeč, Ph.D. December 2011

Tom Nemeč retired from teaching as a full professor of anthropology in 2004; in 2007 he retired as an honorary research professor; deceased 2019.

p.s.: starts additional info that has been added by Walsh after the last sentence by Nemeč.

Those who study Newfoundland stamps, stationery and postal history must do research by consulting renowned philatelists and studying philatelic and historical publications, stamp and auction catalogues (with prices realized) and retail price lists. To better understand their own collections Walsh and Butt discussed their research results with local, national and international philatelists. Encouraged, they decided to publish a catalogue without prices that was a useful handbook in 1988. It boldly introduced a new numbering system to replace the antiquated systems initially developed in the USA and UK in the 1800s. As such, they challenged philatelists to reconsider the organizing principles underlying the now orthodox established systems. Following feedback they produced the 2nd edition in 1992. Realistic valuations for stamps and collateral material were suggested along with Walsh's findings on plate numbers which challenged the work of some specialists. Butt also introduced his preliminary work on outport, town and city post offices and cancels. The 17,000 km coasts of the Colony (since 1824) had anchorages that had been the sites of seasonal fishing and whaling stations since the 1500s. Eventually, between 1200 to 1500 outports were eventually established - some of which had post offices - by the late 1800s. The 3rd edition (1995) added postal rates, first flights and heretofore unknown perforation varieties. Recognition of the popularity of local pre-1949 viewcards or picture postcards (ppcs) was represented by a long list of publishers with the card captions and numeric labels. By the 4th edition (1998) that list had grown to 3600. Although most ppcs were printed locally, many others were produced elsewhere during the Edwardian era. Collecting them became a new popular hobby. Following Butt's death in 2000 Walsh soldiered on facilitated by the emergence of internet web access. The 5th (2002) added yet another collateral field of ephemera: commercial covers with or without cachets and advertisements. The rapid proliferation of business stationery reflected the Colony's developing economy and affords time capsule-like views of the products and services provided. With the expansion of the collateral sections the specialized catalogue was now also an indispensable handbook.

The 6th edition (2006) challenged existing Canadian catalogues by incorporating substantial contributions on "New Brunswick, Nova Scotia, British Columbia, Prince Edward Island and Classic Canada to 1951" (NSSC, 2006: 334). It was written by Walsh "with assistance from C.R. McGuire and contributions from Charles J.G. Verge and detailed Canada postal rate information from Brian D. Murphy and with help from Robert C. Smith." McGuire points out "It complements the period that Newfoundland existed as its own country." The cataloguing principle Walsh and Butt introduced in 1988 to enumerate Newfoundland issues continues: "... stamps printed from the same plate and/or with the same design are all listed together under one whole number." As a hefty volume of more than 500 pages, with colour illustrations it is a continuing labour of love for Walsh; a testament to his colleague John G. Butt.

In 2010 the 7th edition, a tome of well over 600 pages, was released; updates continued. Due to its size it has been re-released in two volumes: *Newfoundland Specialized, Vol. I* with 378 pages and *British North America Specialized, Vol. II* with 265 pages. In Vol. I the major addition is Peter de Groot's (deceased in 2010) research dealing with the rate fee structure as found on revenue documents. Now one could finally make sense of the franking found on documents. Volume II contains two additions: postal rates for NB., NS., BC. and PEI. and semi - official Canada airmail issues. The flights covers involving these semi-official issues are placed in sequential and chronological order.

The 8th edition was released in 2012 as two eBooks; **Walsh Newfoundland Specialized Stamp Catalogue** and **Walsh British North America Specialized Stamp Catalogue**. Together they have more than 750 pages of information. The many semi - official flights are now incorporated as well a substantial listing of Canada Government Official Airmail Flights to 1996. Forgery items of Newfoundland stamps as well all the BNA Colonies are added.

Now, the question is: what will a 9th edition contain, not whether?; T.F. Nemeč (deceased 2019).

p.s.: *by Walsh:*

the 9th edition 2014 has removed the previously listed and separate 1876 - 79 Rouletted issues.

Now they are found under their corresponding dies as found in the First Cents and Second Cents issues.

They were moved because Walsh NSSC lists stamps by die or colour changes not by paper separation techniques.

Because of this the sequence of whole numbering has changed throughout.

Rouletted is a term used when a wheel having slits is employed to cut paper to enable its separation.

The 1897 Cabot Trial Surcharges are renumbered to enable placement into their sequential year of production.

The **10th edition 2016** has added the major research work on ABNCo, NBNCo New York Printings 1865 - 1879 offered by Sammy Whaley. Latest discovered items have been added to update his work. Several articles presented. Provided for all issues are informational descriptions and where found the images, many in colour, of the die proofs and sundry developments used to create the finished post office issue; both ecatalogues have this additional feature.

**Renumbering of all Trial Surcharges occurred due to the improved cataloging of the 1897 Queen Victoria Surcharge issue.*

*The proper cataloging of the 1897 Trial Surcharges both in red and in red and black provide greater understanding of this issue.**

The **11th edition 2018** ecatalogues provide more overwhelming information. Die images; articles proliferate.
 The **12th edition 2020** ecatalogues continues to add more detailed information; dies and other findings.
 The **13th edition 2022** ecatalogues continues to add more detailed information; dies and other findings.
 *** Major research on 1932 Resources 20.4 mm and 21 mm size and perforation 13.3 x 13.3 proves they were done by Perkins Bacon & Co prior to Waterlow & Sons printing the 1941 Resources issues.***
 Offsets observed in 1932 issue indicates two different printing presses utilized;
 wet ungummed paper; dry pregummed paper.
 The **14th edition 2023** ecatalogues continues to add more detailed information; dies and other findings.
 BNA Canada has two massive research findings; see NSSC 114 Admiral inverted overprint proven genuine;
 and 1937 Mufti coil printing press types.
 Newfoundland has 939 pages. British North America has 783 pages and with revenue issues as stated.

FOREWORD Colin D. Lewis, FCPS, Swansea, United Kingdom. February 2015 -

I continue to have the pleasure of writing the foreword to the latest updated edition of the *Newfoundland Specialized Stamp Catalogue*. John Walsh maintains the long standing tradition of this catalogue by developing and improving on the information it contains. Whereas many areas of British North America collecting have seen a downturn in interest, that of Newfoundland continues to increase in popularity and this can only continue when quality publications such as this are published.

It is a reflection on the sustained and dedicated efforts of the editor that each new issue of the catalogue includes new information as well as up-to-date revisions and the fine tuning of many of the existing sections. An important addition to this issue is the inclusion of the research data produced by Jean-Claude Vasseur on the 1928 First Publicity Issue, in particular the identification that two printing plates were used to produce the one cent stamp. Accurate, and the latest information is essential to the postal historian, dealer and philatelist alike, whether it is undertaking research, preparing inventory valuations or considering new fields of study. This catalogue is an asset in all these areas and a must have reference for serious collectors and postal historians, as well as professional dealers.

In the last issue the inclusion of tables of pre-stamp postal rates was most welcome and a long overdue addition to the work. It was hoped that inclusion of those rates would have stimulated users of the catalogue to forward updated information to the editor, as gleaned from their own collections and records. The accuracy of information can only be improved through users challenging the detail recorded. There are very few extant records that contain early rates and much of the included information has been gleaned from surviving correspondence. There will undoubtedly be amendments to this section as new information comes to light so if you have any suggestions please communicate them to the editor. The importance of having all the data, in respect of rates, in a single publication makes it easier for the researcher to quickly locate information whilst it simplifies updating and amending tables when new findings are brought to the notice of the catalogue editor.

The quality of a publication is best judged on the information it contains and for that to happen it must attract contributions from people who are experts in their field. To that end *Newfoundland Specialized Stamp Catalogue*, or more appropriately the editor, achieves that goal as he continuously seeks out people with advanced knowledge to contribute to the work.

John Walsh, the catalogue editor, has spent many years of dedicated research in seeking out new fields that would benefit collectors and he should be deeply thanked for bringing new areas of collecting and interest to the forefront of Newfoundland collecting.



'Chipman Twins'. Provenance: Colin D. Lewis
 April 27, 1861 paid 6½ Pence Sterling per ½ ounce from Harbor Britain to Boston and 5 Cents US postage collect fee Boston to North Oxford Mass. Redirected to Essex Vermont. The bisected 8 Pence is equal to 4 Pence Sterling whilst the 3 Pence Currency converts to 2½ Pence Sterling.

'Chipman Twins'. Provenance: Dale-Lichtenstein;
 Foxbridge; Dr. Chan; Robertson

TABLE of CONTENTS		page
BRIEF SURVEY of the EIGHT EDITIONS by Thomas F. Nemeč, Ph.D.		4
FOREWORD by Colin D. Lewis, FCPS Swansea, United Kingdom		5
NUMBERING SYSTEM EXPLANATION		22
VALUATION RATIONALE		23
ABBREVIATIONS		24
ACKNOWLEDGMENTS		25
NEWFOUNDLAND POSTAGE STAMPS, 1857 — 1947: A BRIEF HISTORICAL AND ICONOGRAPHIC STUDY by Thomas F. Nemeč, PhD		26
NEWFOUNDLAND'S STAMP DEALERS by Terrance R. Harris		38
MAP LOCATIONS of ST. JOHN'S POST and SUB OFFICES by John G. Butt; David Piercey		39
COMPARATIVE TABLE OF STAMP CATALOGUE NUMBERS by C. R. McGuire		41
NEWFOUNDLAND POSTAGE STAMPS		
1857	First Pence issue	49
1860	Second Pence issue	51
1861	Third Pence issue	52
1865 - 1910	Geometric Cancels <i>research article by David Piercey</i>	56
1865 - 1879	First Cents issue	61
1868 - 1879	Second Cents issue + articles on 'tumbling stones'; 'blue raindrops'; 'major misplaced reentry'	65 68; 70; 71
1880 - 1898	British American Bank Note Co.(Montreal Printing) + articles 'half cent dog'; 'falling blue ice cubes';	74 75; 81
1890	Queen Victoria Info <i>Newfoundland stamps marked SPECIMEN</i> Info <i>Analysis Nfld. "aniline inks" by Richard H. Judge</i> Info <i>Newfoundland mail FORWARDERS</i>	84 84 85 86
1897	John Cabot & Jubilee issue	87
1897	1890 Queen Victoria articles on 'Red Trial Surcharge; Red and Black Surcharge'; 'Missing Surcharge'	90; 100; 102
1897	1890 Queen Victoria Trial Surcharges	106
1897	1890 Queen Victoria Provisional Surcharge issue	107
1897 - 1901	Royal Family issue	108
1908	Map Stamp issue	112
1897 - 1908	1897 Royal Family and Map issues Requisition Orders with SPECIMEN	114
1910	John Guy issue (lithographed)	115
1898 - 1901	Newfoundland Duplex cancels <i>researched by Carl Munden</i>	123
1911	John Guy issue (engraved)	124
1911	Royal Family issue	125
1897 - 1947	Postage Paid Cancels	132
1919	Caribou issue + 15¢ Prussian blue ink <i>research article by R.H. Judge</i>	133; 137
1918 - 20	Cabot Trial Surcharges	144
1920	Cabot Provisional Surcharges	144
1923 - 1924	Pictorial issue	145
1928	First Publicity issue	155
1929 - 1931	Second Publicity issue (Re - engraved)	167



1920 Surcharge; partially missing

1929	Pictorial Issue Trial Surcharge article	177
1929	Pictorial Issue Trial Surcharges	179
1929	Pictorial Issue Provisional Surcharge	179
1931	Third Publicity issue (Re - engraved & watermarked)	180
1932	Info article <i>Proof perf. 13.3 x 13.3 and 21 mm stamps originally done by Perkins Bacon & Co</i>	184
1932 - 1938	First Resources issue	196
1933	L. & S. Post. Provisional Overprint	216
1919 - 1932	Booklets	217
1933	Sir Humphrey Gilbert issue	219
1935	Silver Jubilee King George V issue	225
1937	Coronation King George VI issue	225
1937	Long Coronation issue	226
1938	Royal Family issue	234
1939	Royal Visit issue	238
1939	Royal Visit Provisional Surcharges	238
1941	Sir Wilfred Grenfell issue	238
1942 - 1949	Second Resources issue	239
1943	Memorial University College issue	249
1946	Memorial University College Provisional Surcharge	249
1947	Princess Elizabeth	250
1947	450th Anniversary John Cabot	251
	Extraction of John Ayshford published research on <i>Last Issue of Newfoundland</i>	252
1939	Postage Due issue	270
1897 - 1942	Dignitary Presentation Cards (DPC)	271

NEWFOUNDLAND AIRMAIL STAMPS

1919	Hawker Airmail Overprint	272
1919	Martinsyde Airmail Overprint	272
1919	Alcock and Brown Airmail Surcharge	273
1921	Halifax Airmail Overprint + <i>article on invert offsets</i>	273; 274
1922	Vickers-Vimy Airmail Essays	278
1927	De Pinedo Airmail Overprint	278
1930	Columbia Airmail Surcharge	278
1931	Airmail issue (unwatermarked)	279
1931	Airmail issue (watermarked)	282
1932	Dornier Do - X Airmail Surcharge	282
1932	Wayzata Essay + <i>research article by Jerome C. Jarnick</i>	283
1933	Labrador Airmail issue	285
1933	Balbo Airmail Surcharge + <i>article on correct first day issue</i>	288; 288; 293
1943	Plane Over St. John's Airmail issue	294
1919 - 1940	Unissued Airmail Essay Die Proofs of 1919 -23; 1931; 1940	294
1919 - 1947	First Flight Covers	295



NEWFOUNDLAND POSTAL STATIONERY

1905	Officially Sealed Dead Letter Office	309
1873 - 1933	Post Cards	311
1889	Post Bands	314
1889	Envelopes	315
1938	Business Reply Envelopes	316
1938	Registered Letter Envelopes	317
1906 - 1941	International; Imperial Reply Coupons	317
1944 - 1948	Armed Forces Air Letter Sheet Envelopes	318
1941	Canadian Armed Forces Cancels CAPOs	319
1941	American Armed Forces Cancels	319
1938	Registration Gummed Labels	320
1918 - 1948	Postal Slogans	321



First Day Use; message side confirms date
courtesy Brian C. Bursey

NEWFOUNDLAND POSTAGE METER MACHINES

1928 - 1949	Midget Meter	323
1928 - 1949	Neopost Meter	323
1947 - 1949	Pitney-Bowes Meter	324

TABLE of PLATE NUMBERS

325

TABLE of MARGIN IMPRINT INSCRIPTIONS

326

NEWFOUNDLAND STAMPLESS POSTAL RATE TABLES *from research done by Colin D. Lewis*

331

NEWFOUNDLAND GENERAL POSTAL RATE TABLES + Yearbook and Almanac pages

336

NEWFOUNDLAND INLAND REVENUE STAMPS

1898; 1907; 1911; 1938 - 1964	Revenue Issue articles	361; 365; 367
1898	Queen Victoria issue	369
1907	King Edward VII issue	370
1911	King George V issue (with imprint)	371
post 1920	King George V issue (no imprint)	371
1922	Revenue Trial Essays	372
1937	Revenue Trial Essays	373
1938 - 64	Caribou issue {perforation changes denote year of issue}	374
	1938 perf. 13.9 x 13.9, 14.3 x 14.3; 1942 perf. 12 x 12; 1964 perf. 13.25 x 13.5	
1963	Caribou Provisional Surcharges	376

NEWFOUNDLAND REVENUE DUTY RATE TABLES *from research by Peter de Groot*

377

	Perfin Styles	384
1927	Transportation Tax information	385
1927	Transportation Tax	386
1914	Money Order Stamp Tax only Overprint	386

NEWFOUNDLAND CUSTOM DUTY STAMPS

1925	Edward, Prince of Wales issue	387
1938	Caribou issue	387
1932	Board of Liquor Control Relief Tax Stamp	387
1938	Beer Stamp	387

NEWFOUNDLAND WAR SAVINGS STAMPS

1940	War Savings Stamp issue	388
1946	National Savings Stamp issue	388
1958	Newfoundland Savings Bank Overprint	388
1940 - 64	War Savings Certificate Card Booklets <i>with help from Terrance R. Harris</i>	388
1940 - 64	War Savings Certificates	388

NEWFOUNDLAND PERFIN STAMPS

	Lists of stamps having Company Perfins <i>from research done by Barry C. Senior</i>	389
--	---	-----

NEWFOUNDLAND TOBACCO TAX STAMPS

1904	King Edward VII Cigarette issue	393
1904	Provisionals — 1904 King Edward VII Cigarette Surcharges	393
1907	King Edward VII Cigarette issue	394
1907	Provisionals — 1907 King Edward VII Cigarette Surcharges	394
1913	King George V Cigarette issue	394
1913	Provisionals — 1913 King George V Cigarette Surcharges	394
1913	Provisional — Cut Tobacco Cigarette Issue Surcharges	395
1922	Small Strip Cigarette Style Series A, B, C	395
1922	Provisionals — 1922 Small Strip Cigarette Surcharges Series A, B	395
1926	Small Strip Cigarette Style Series A	395
1926	Provisionals — 1926 Small Strip Cigarette Surcharges Series A	395
1928	Small Strip Cigarette Style Series A	396
1928	Provisionals — 1928 Small Strip Cigarette Surcharges Series A	396
1937	King George VI Cigarette issue	396
1937	Provisionals — 1937 King George VI Cigarette Surcharge	396
1939	Large Caribou Cigarette issue	396
1939	Provisional — 1939 Large Caribou Cigarette Surcharge	396
1940	Small Caribou Cigarette issue	397
1948	Provisional — 1940 Small Caribou Cigarette Surcharge	397
1940	Small Caribou Cigarette issue. Imperforate	397
1941	Military Canteens (Large) Cigarette issue	397
1941	Provisionals — 1941 Military Canteens (Large) Overprints	397
	Military Canteens (Small) Cigarette issue	397
1945	Cigarette Importation (Small Size)	398
	Cigarette Importation (Large Size)	398
	Provisionals — Cigarette Importation (Large Size) Overprints	399
1913	Cut Tobacco with Newfoundland Dog issue	399
	Provisional — 1907 King Edward VII Cut Tobacco Overprint	399
	Provisional — 1913 King George V Cut Tobacco Surcharges	399
1927	Tobacco Excise Large Strip Style	400
1937	Tobacco Excise Small Strip Style	400

1945	Military and Naval Canteens Tobacco issue	400
	First Tobacco Importation Strip Type	401
	Second Tobacco Importation Strip Type	401
	Third Tobacco Importation Strip Type	401
	Fourth Tobacco Importation Strip Type	402
	Plug Chewing Tobacco	402
	LIST of NEWFOUNDLAND TOWN and OUTPORT POST OFFICES and CANCEL TYPES	403
	LIST of ST. JOHN'S POST OFFICE CANCELLATIONS; and Locations by Electoral Districts	421
	TOWNS with TYPES of some DIFFERENT STYLISTIC CANCELS	422
	LIST of LABRADOR POST OFFICE CANCELLATIONS	423
	RAILWAY T. P. O. and R. P. O. CANCELS <i>offered from research done by Lewis M. Ludlow & Brian T. Stalker</i>	425
	NEWFOUNDLAND FORGERIES <i>offered from research done by Richard Gratton</i>	439
	NEWFOUNDLAND FAKES and FORGERIES <i>offered from research done by Ed Wener</i>	454
	MOENS NEWFOUNDLAND FAKE CORRECTIONS <i>offered from research by Gerhard Lang-Valchs</i>	486
	NEW YORK PRINTINGS 1865 - 1879 CENTS COVER STUDY <i>offered from research done by Sammy Whaley</i>	491
	NEWFOUNDLAND COINS <i>offered with help from John O'Mara</i>	700
	NEWFOUNDLAND PICTORIAL POSTCARDS (viewcards) Introduction	705
	Multi-Views and <i>research offered by Brian C. Bursey</i>	706
	C.T. American Art Coloured	708
	Atkinson Ltd, Bay Roberts	708
	Atlas Society	708
	Ayre and Sons Florizel Series	708
	Ayre and Sons H Series	708
	Ayre and Sons (238628 – 238639)	709
	Ayre and Sons View Folders	709
	Ayre and Sons	709
	Ayre and Sons (1000 Series)	710
	Ayre and Sons (1100 Series)	713
	Ayre and Sons (1200 Series)	716
	Ayre and Sons (1300 Series)	719
	Ayre and Sons (1400 Series)	721
	Ayre and Sons (1500 Series)	722
	Ayre and Sons (2000 Series)	723
	Ayre and Sons (3000 Series)	724
	Ayre and Sons (3100 Series)	725
	Ayre and Sons (3200 Series)	725
	Ayre and Sons (3300 Series)	726
	Ayre and Sons (3600 Series)	726
	Ayre and Sons (3800 Series)	727
	Ayre and Sons (3900 Series)	728
	Ayre and Sons (4100 Series)	729

Ayre and Sons (4200 Series)	730
Ayre and Sons (5200 Series)	730
Ayre & Sons (43448 and 433990 Series and 474808)	730
Bagg Bros., Curling	731
Bairds Souvenir Miniature Postcards	731
C. W. Bartlett, Petries	731
Barnes and Company	731
B. Basha, Photographer	731
W. R. Bidgood, R.N.	732
C. D. Bishop	732
E. I. Bishop Photo Series	733
Botwood Art Studio – E. J. Lanning	735
Bowring Brothers	735
Fred'K. M. Brooks	735
William Brown	736
W. F. Butt	736
Garrett Byrne	736
Garrett Byrnes Series	737
Byrne's, St. John's, N.F. Series	738
Byrne's, St. John's, N.F. Series (Numbered)	739
Canada Gift and Novelty	740
Canadian Post – Card Co. Ltd.	740
W. P. Cannan, Grand Rapids, Educational Series	741
Cape Breton Postcard Co.	741
J. P. Cash, St. John's	741
Clarke Steamship Company Ltd	741
Colonial & Continental Church Society	741
P. H. Cowan P.H.C. (1 – 19) Low Numbers	741
P. H. Cowan P.H.C. (200 – 262) High Numbers or without numbers	742
P. H. Cowan, Printed in France	743
Cox & Co., St. John's	743
L. Clyde Davidson & Co., Halifax	743
Dicks and Company Glossy Coloured P. C. Series	743
Dicks and Company, 149 / Series and 118 / Series	744
Dicks and Company, 150 / Series	744
Dicks and Company Ltd., St. John's, Newfoundland	744
Dicks and Company, Collotype P.C. Series	746
Dicks and Company	746
Dicks and Company (100 Series)	746
Dicks and Company (1200 Series)	746
Dicks and Company Pictorial Series (1300 Series)	747

Dicks and Company Pictorial Series (Printed in England)	748
Dicks and Company, Glossy Photo, Postcard Series	748
Dicks and Company, Sealing Series	749
Dicks and Company, Ter – Centenary Series	749
Dicks and Company, (Printed in Britain)	750
Dicks and Company, Copyright (Newfoundland Souvenir Post Card N.S.P.C.)	751
Dicks and Company, Copyright (Real Photo Series)	753
The Douglas Co. (Studio)	753
Dunlap	754
J. E. Evans Port Rowan, Ont.	754
H. J. Feaize, Carbonear	754
F. Firth & Co. Ltd. Reigate	754
Furness Warren Line, Liverpool	754
S. E. Garland	754
Garland Chromo – Litho Series	755
Garland Glossy Collotype Series	756
Garland Glossy Colour Series	759
Garland Halftone Series	760
Garland Moonlight Series	761
Garland Photo Iris Series	761
Garland Photolet Series	762
Garland Photogravure Series	763
Garland Platinum Series	764
Garland Series	765
Garland Tinto Gravure Series	766
Garland Sport and Pastime Series	767
Garland Statesmen Series	767
Gray and Goodland's, St. John's	768
Grenfell Association [redo: seven types listed]	769
Guardian Associates Ltd.	769
W. Harbrow, Iron Building Works, London	770
C. W. Hawley, Photographer	770
J. C. M. Hayward, Grand Falls	770
J. W. Hayward, Montreal	770
S. J. Hayward, Montreal for Canadian Railway News Company	770
T. B. Hayward, St. John's	771
W. E. Hebb, Halifax, N.S.	775
H. V. Henderson, West Bathurst N.B.	775
Herald Print	775
Hermann Post Card Co	775
HLM	775

Hodge Bros., Twillingate, N.F.	775
Hunt's Collotype Process	775
Imprimerie Rotogravure S.A., Geneva	775
Jones, Hr. Grace	775
Kaiden-Keystone photo	776
Wm Kennedy & Sons (C.K.)	776
Knowlings Newfoundland Series	776
E. C. Kropp Co., Milwaukee	777
Lacey, the Post Card Magnate	777
Arthur Lane Studios Toronto	778
Walter E. Leroux	778
Lighthouse Literature Mission	778
W. J. Lockyer	778
Locomotive Publishing Company, Ltd. London	778
Marshall Studios Ltd.	778
McCoy Printing Co. "Acadian Series"	778
McCoy Printing Co. Moncton, N.B.	779
MacFarlane	780
C. A. Maijer Supply Co. And Travelling Photographer	781
C. L. March Co., St. John's	781
T. M. Morrow, St. John, N.B.	781
Moravian Mission [major redo]	781
Newfoundland Pictorial Post Card Co., 1904	782
Newfoundland Regiment	782
W. Notman and Son	782
Novelty Manufacturing and Art Co. Ltd. Montreal	782
Newfoundland Quarterly, St. John's, Pub 1958	783
News Publishing Co. Limited Truro, N.S.	783
S. R. Oakley	783
C. J. O'Keefe	783
P. O'Mara, Druggist St. John's Nfld	783
D. (Doris) Parsons Corner Brook Nfld.	783
J. C. Parsons, Corner Brook and also St. John's	784
R. T. Parsons	786
S. H. Parsons #1700; #X9557; 1914 Disaster	787; 788
S. H. Parsons	788
S. H. Parsons (63883 - 63926)	790
S. H. Parsons X5317	791
Parsons Art Store	792
Parker & Monroe Ltd.	792
Peco	792

Peco or Photogelative Engraving Numbered	795
Pugh Mfg. Co.	798
Public Benefit Store, Bonne Bay, Nfld	798
Real Photo	799
R. Roberts, Bonne Bay NF	800
C. & B. Ross, Harbor Grace	800
Rothwell & Bowring Limited St. John's Newfoundland	800
Royal National Mission to Deep Sea Fishermen [redo: three types listed]	801
Rumsey & Co. Ltd. Toronto	801
SA	802
Souvenir Program Coronation Regatta...St. John's, Nfld [1911]	802
W. E. Stirling, Publisher	802
The Mayrose Co Publishers, Linden N.J.	802
The Post Card Agency	802
The Royal Stores Limited	802
C. R. Tibbo	804
Raphael Tuck & Sons, Coloured Postcards, Cecil S. Ashdown, Artist	804
Raphael Tuck & Sons Ltd, "Oilfacsim", B. F. Gribble, Artist	804
Raphael Tuck & Sons Ltd, Series I and II [special for British Empire Exhibition 1924]	804
Raphael Tuck & Sons Ltd	804
Raphael Tuck & Sons Ltd Real Photograph [Labrador Series 1, 2, 3]	804
Raphael Tuck & Sons Real Photograph [different copyrights]	805
Raphael Tuck & Sons Real Photograph St. Anthony - Int'l. Grenfell Assoc. HQ [Type 1, 2]	805
Raphael Tuck & Sons "Oilette", "Empire" series [6 listed]	806
T. I. C.	807
Uitgave Broederhuiszeit (Netherlands)	808
Universal Postal Union	808
Valentine and Sons, Toronto and Montreal	808
Verlag Der Bildstelle Der Herrnhuter Missionshilfe E.V. Herrnhut SA	809
Verlag Der Missionsbuchhandlung, Herrnhut	809
Verlag Missionsverwaltung Lichtbildabteilung, Herrnhut SA	810
Warburgs Kunst-Forlag Kobenhaven Eneret	810
Ward & Co., Montreal	811
Warwick Bros.	811
Western Star	811
VELOX Postcards; NOKO Postcards; AZO Postcards	812
AGFA ANSCO Postcards; EKC Postcards	812
Unknown Real Photo Postcards	813
Selection of Small publishers of Newfoundland Postcards	813
NEWFOUNDLAND ADVERTISING BUSINESS & CORNER CARDS Introduction	816
Alphabetic listings showing BUSINESS NAME; LOCATION; MESSAGE	817
NEWFOUNDLAND RATION STAMPS <i>booklet provided by Thomas F. Nemeč, Ph.D.</i>	928